

Friday, September 21, 2018

6:00pm



Tots 2, 3, 4	200 meters
Pre-K & K with parents	½ K
Pre-K & K w/o parents	½ K
1 <sup>st</sup> & 2 <sup>nd</sup> Grades	1 K
3 <sup>rd</sup> & 4 <sup>th</sup> Grades	1 ½ K
5 <sup>th</sup> & 6 <sup>th</sup> Grades	2 K

## Preparation for Race

- ⇒ Hydration is very important when running. We encourage you to bring a filled water bottle for your child.
- ⇒ Plan to arrive in the park no later than 5:45pm. This is to ensure you don't miss your race due to a train.
- ⇒ Before the race, write the cell phone # of the adult who is in the park with the child, on the back of the bib. In case of separation following the event, organizers can contact the adult.
- ⇒ Pin the bib number on the front of child's shirt. DO NOT remove the bottom portion of the bib. The bottom portion of the bib will be removed after he/she crosses the finish line.
- ⇒ The child is to join his/her age group in the park when called. Look for the appropriate age group sign.
- ⇒ Parents of 1st grade and older may join children with special needs on the course. Parents can go to the bib pick-up area to request a sticker to be placed on the child's bib. This sticker will allow the parent to join the child in the start corral and enter the finish chute.

## During the Race

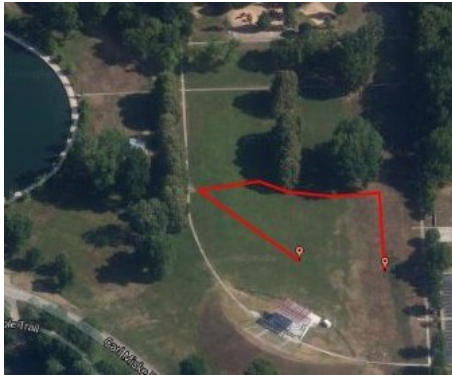
- ⇒ Volunteers will collect the bottom of the bibs at race end. Elementary School Challenge: elementary school participation percentage will be calculated, and three first place and three second place prizes will be awarded to top schools for their school's fitness program. Preschool Challenge: preschool participation percentage will be calculated, and first and second place prizes will be awarded to the top school for their school's fitness program.
- ⇒ The races will not be timed. The Kids Fun Run is about fun and fitness awareness. Participants will receive a commemorative medal after he/she crosses the finish line. A medal engraver will be onsite in the park on Friday evening and will engrave medals for \$5 each.
- ⇒ Water and a banana will be available after the race for children participating in the race. After each race, parents may collect their children at the end of the finish line chute, in the child pickup zone.

## Other Information

- ⇒ Restrooms are located near the round lake in the park.
- ⇒ Port-o-potties will be near the flagpole at the entrance of the park.
- ⇒ The Course Maps are printed on the reverse side for your reference.

# Kids Fun Run Course Maps

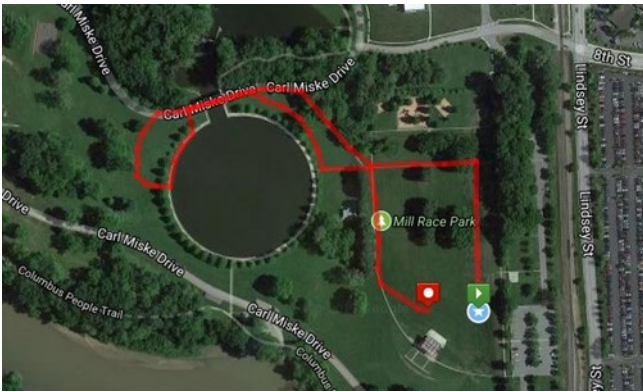
Each age division will share the **START** and **FINISH** lines. Volunteers will be on the course directing the participants.



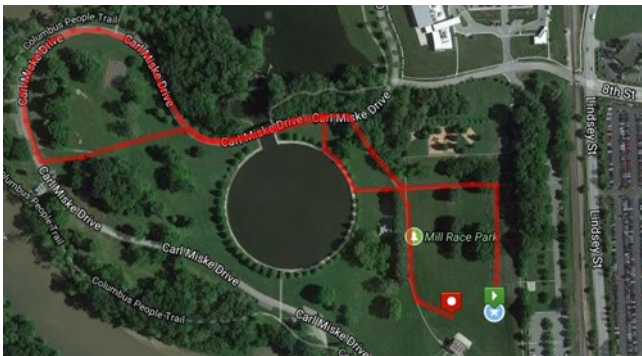
~200 meters Tots Race (2, 3, 4)



½ K Course: Pre-K & K with parents  
½ K Course: Pre-K & K without parents



1 K Course: 1st & 2nd Grade



1½ K Course: 3rd & 4th Grade



2 K Course: 5<sup>th</sup> & 6<sup>th</sup> Grade